

AI IN ACTION

ขับเคลื่อน [องค์กรอัจฉริยะ]
ด้วยพลังของ
IT และ OT



Reinventing Enterprise Networks with
AI-Driven Simplicity and Security
Powered by **Cisco Meraki**

Yukunthorn Kajorndech
Product Sales Specialist



INCRAM[®]

CISCO
Distributor

Reinventing Enterprise Networks with AI-Driven Simplicity and Security Powered by Cisco Meraki

CISCO Meraki



Yukunthorn Kajorndech
Product Sales Specialist

Transformation meets network complexity



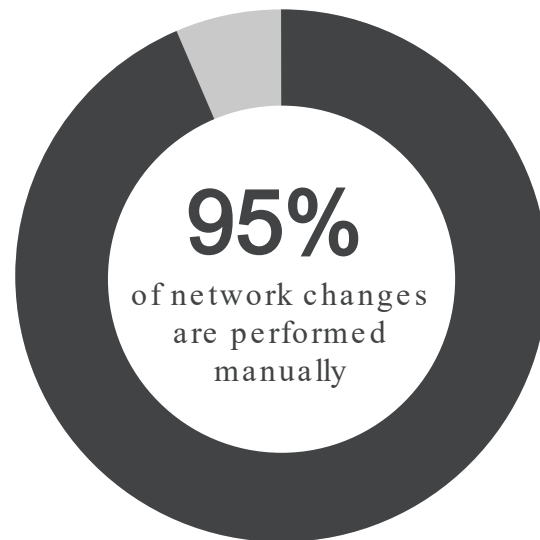
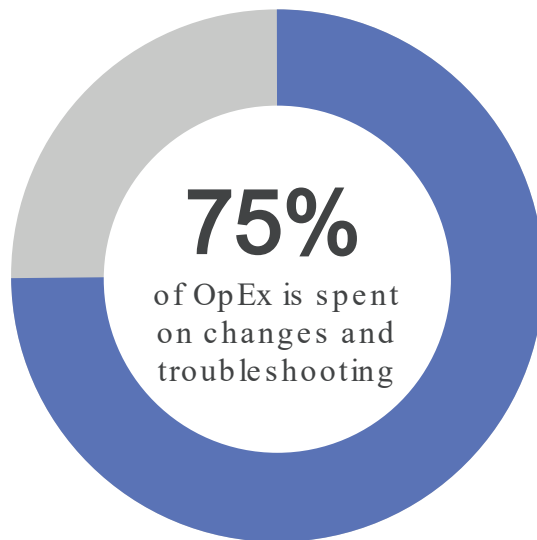
\$60B

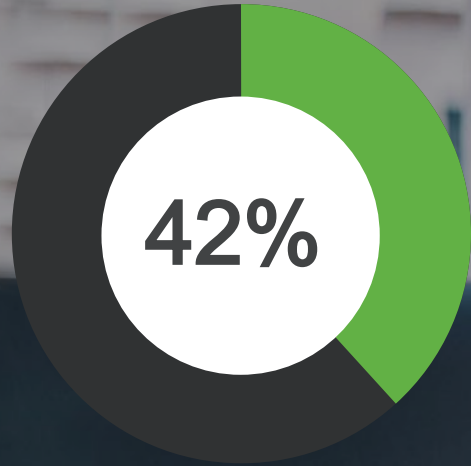
Annually spent on
network operations ,
labor, and tools¹

¹Cisco McKinsey Study



Transformation meets network complexity





of surveyed organizations
**saved 50 - 70% or more
time** deploying, maintaining,
and/or troubleshooting IT
since using Meraki.

Meraki at a glance

Connecting **passionate people** to their mission by **simplifying** the digital workplace.



2006

- Invented cloud networking

2012

- Acquired by Cisco

2017

- IT Portfolio expansion to IOT

2021

- Meraki powers 10M active devices

Today

- 19+ years designing scalable and secure cloud architecture

Meraki: Born in the cloud, growing daily, and **trusted everywhere**



838K
customers

4+

million

CUSTOMER
NETWORKS

16+

million

MANAGED
DEVICES ONLINE

190+

COUNTRIES
IN NETWORK

700+

million

EXTERNAL API
DAILY REQUESTS

360+

million

DAILY END USER
DEVICES

250+

million

DAILY SPLASH
PAGES SERVED

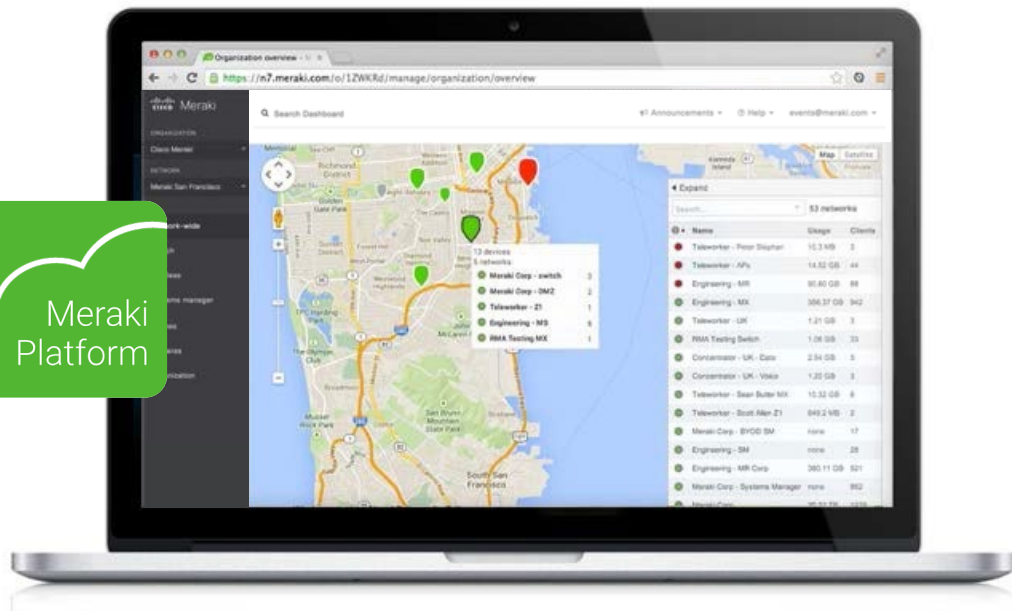
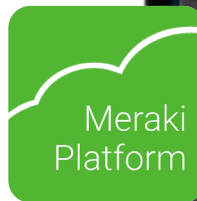
99.99%

CLOUD SLA

WHY MERAKI

Cloud -first ops

- **Simplicity** with intuitive management
- **Scalable** , SMBs to large enterprises
- **Intelligence** as IT and OT converge



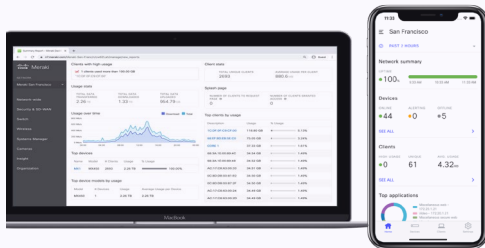
DESIGNED FOR
Ease of new



BUILT FOR
Ease of change

Meraki Dashboard **Benefits**

Unparalleled Visibility



Gain insight into what your bandwidth is being used for and who is using it



Receive regular summary reports and alerts when issues arise



Visibility into overall network health and performance

Intuitive Network Management



Multi-site management using the dashboard



Access from anywhere via intuitive browser-based interface



Out-of-the-box solution for full-stack network management

Inherent Scalability



Highly programmable and integration-ready for future growth



Supports small deployments or million-user plus deployments



All inclusive licensing model

True zero -touch provisioning out of the gate



One-time remote ,
web - based
configuration.
Templates **simplify** large
multi -site deployments



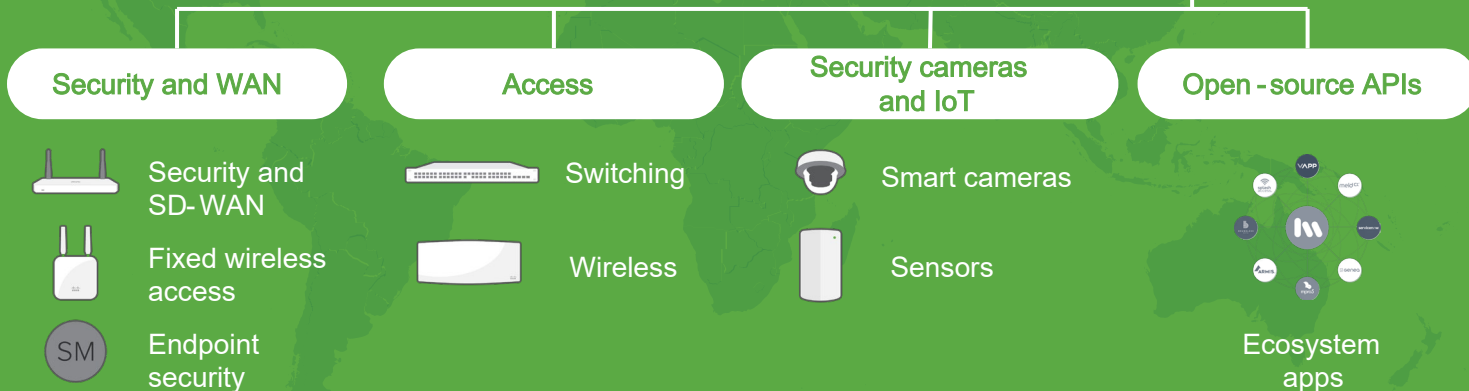
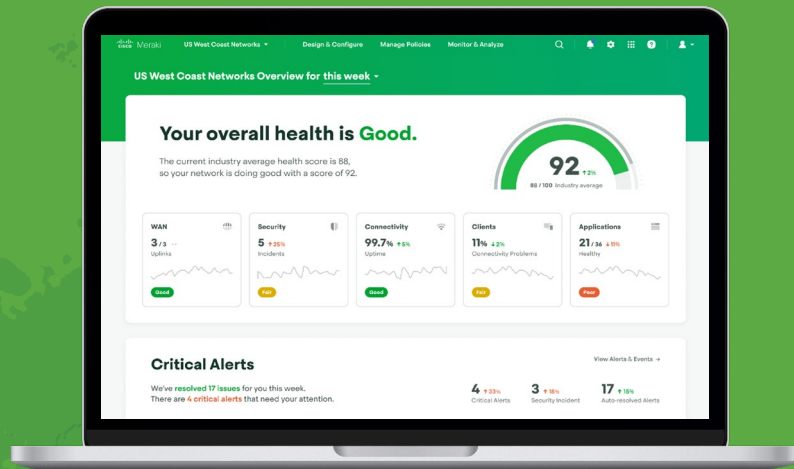
No pre-staging
No onsite configuration



Unbox and plug in
appliances at
required locations

Built on an intelligent cloud platform IT and IoT

94% of customers save time with a single intuitive dashboard



A next-gen model for every network need

Ruggedized



MS130R

- 8x 1 Gbps SFP
- 30W PoE
- Ideal for hot, cold, or tight spaces

Enterprise -class switching

Gigabit access Up to 1 Gbps



MS130

- 8/24/48 port options
- PoE/PoE+
- Compact or IRU



MS150

- 24/48 ports, 4x SFP+
- 60W PoE++
- Stacking 80 Gbps



Catalyst 9300 T/P/U

- 24/48 ports; 40 Gbps QSFP+ and 10 Gbps SFP+ modular uplink
- Data, 30W PoE, or 60W UPOE
- 480 Gbps physical stacking; StackPower



Catalyst 9300L T/P/PF

- 24/48x 1 Gbps/100 Mbps copper
- 4x SFP+ fixed fiber uplinks
- Data, 30W PoE
- 320 Gbps physical stacking

NEW!

Multigigabit bandwidth and scale

Multigigabit access Up to 10 Gbps (mGig)



MS130X

- 8/12/24/48 ports; PoE+
- 2.5 Gbps + 10 Gbps SFP+
- Compact or IRU



Catalyst 9300 LUXG

- 24/48x 10 Gbps mGig
- 60W PoE
- 4x SFP+ 1/10 Gbps fixed fiber uplink



MS150MP

- 24/48 ports; PoE++
- 5 Gbps + 10 Gbps SFP+
- Stacking 80 Gbps



Catalyst 9300 XTX/HX/HXN

- 24/48x 10 Gbps mGig
- Data only, 90W UPOE+
- Supports 100 Gbps uplinks
- Modular uplink options



Catalyst 9300 UX/UXM/UN

- 24/48 ports; 40 Gbps QSFP+ and 10 Gbps SFP+ modular uplink options
- 60W UPOE support
- 480 Gbps physical stacking; StackPower
- Modular 80 plus Platinum PSU

Fiber aggregation 10/25 Gbps SFP+ fiber



Catalyst 9300 12/24 S-M

- 24/48 port 1 Gbps SFP
- 40/10/1 Gbps fiber modular uplink options



Catalyst 9300X 12/24Y

- 25/10/1 Gbps SFP28
- 40/10/1 Gbps fiber modular uplink options

Catalyst Meraki 9300

Simply powerful



Power of the Catalyst Switching with the scalability of Meraki cloud management.

Modular uplinks

Hot-swappable uplink modules for flexible hardware upgrades and easier management.

Adaptive policy

Micro-segmentation of users, devices, and applications to simplify security and access policies.

StackPower

Create additional power capacity by pooling sources to power more PoE devices.

Wide range of mGig speeds

PoE on all 24/48-ports along with SFP and mGig and the option to address legacy infrastructure issues.

60 W UPoE density

Power your smart space needs with UPOE and IEEE 802.3bt support.

Improved physical stacking

Up to 480 Gbps to provide more throughput for Wi-Fi 6 and IoT and higher network resilience.

The Wi-Fi 7 portfolio

Next-Level Unified Hardware

NEW!



CleanAir®
Pro

CW9172I

- 6 Spatial Streams
- 2x2:2 across 3 radios, 3 bands (2.4GHz, 5GHz, 6GHz) or 2x2:2 on 2.4GHz and 4x4:4 on 5GHz
- BLE/IoT and dedicated scan radio
- Single 2.5Gbps multigigabit uplink
- USB 2.0 – 4.5W
- DC Power Jack
- Integrated Omnidirectional Antenna
- Global Use AP

NEW!



CleanAir®
Pro

CW9172H

- 6 Spatial Streams 2x2:2 across 3 radios, 3 bands (2.4GHz, 5GHz, 6GHz)
- BLE/IoT and dedicated scan radio
- Single 2.5Gbps multigigabit uplink
- 3x 1Gbps LAN port with 1x POE out
- 1x Passthrough port
- Integrated Omnidirectional Antenna
- Global Use AP



CleanAir®
Pro

CW9176I

- 12 Spatial Streams 4x4:4 MU-MIMO across 3 radios, 3 bands (2.4/5GHz (XOR), 5GHz, 6GHz)
- BLE/IoT radio
- Single 10Gbps multigigabit
- Ultra Wide Band (UWB)
- USB 2.0 – 9W
- Accelerometer
- Built-in GPS/GNSS, w/ support for ext. antenna
- Integrated Omnidirectional Antenna



CleanAir®
Pro

CW9176D1

- 12 Spatial Streams 4x4:4 MU-MIMO across 3 radios, 3 bands (2.4/5GHz (XOR), 5GHz, 6GHz)
- BLE/IoT radio
- Single 10Gbps multigigabit
- Ultra Wide Band (UWB)
- USB 2.0 – 9W
- Accelerometer
- Built-in GPS/GNSS, w/ support for ext. antenna
- Integrated Directional Antenna (70x70)



CleanAir®
Pro

CW9178I

- 16 Spatial Streams 4x4:4 MU-MIMO across 4 radios, 3 bands (2.4 GHz, dual 5GHz, 6GHz)
- BLE/IoT radio & accelerometer
- Dual 10Gbps multigigabit
- Ultra Wide Band (UWB)
- USB 2.0 – 9W
- Accelerometer
- Built-in GPS/GNSS, w/ support for ext. antenna
- Integrated Omnidirectional Antenna

Meraki SD-WAN & Security

Small Branch



MX67/68

- Up to 50 users
- 600 Mbps FW through put Wi-Fi & PoE



MX67C/68 CW

- Up to 50 users
- 600 Mbps firewall throughput
- Wi-Fi & PoE
- CAT 6 & LTE modem



MX75

- Up to 250 users
- 1 Gbps firewall throughput
- LAN PoE

Medium to Large Branch



MX85

- Up to 250 users
- 1 Gbps FW through put
- WAN PoE



MX95

- Up to 500 users
- 2 Gbps FW through put
- WAN PoE



MX105

- Up to 750 users
- 3 Gbps FW through put
- WAN PoE

Virtual



VPN Through put

Small	200 Mbps
Medium	500 Mbps
Large	1 Gbps

Campus or Concentrator



MX250

- Up to 2,000 users
- 4 Gbps FW through hput



MX450

- Up to 10,000 users
- 6 Gbps FW through put

AI Improves Network Operations – AIOps

Artificial intelligence (AI) is becoming driving force behind improving network operations, encompassing innovations such as machine learning, predictive analytics, statistical modeling and problem diagnosis. It brings the following benefits



Increases network availability



Enhances network performance



Brings future-proof network resilience.



Early detection reduces support calls.



Improves troubleshooting by enhanced root cause analysis.



Raises operational efficiency.



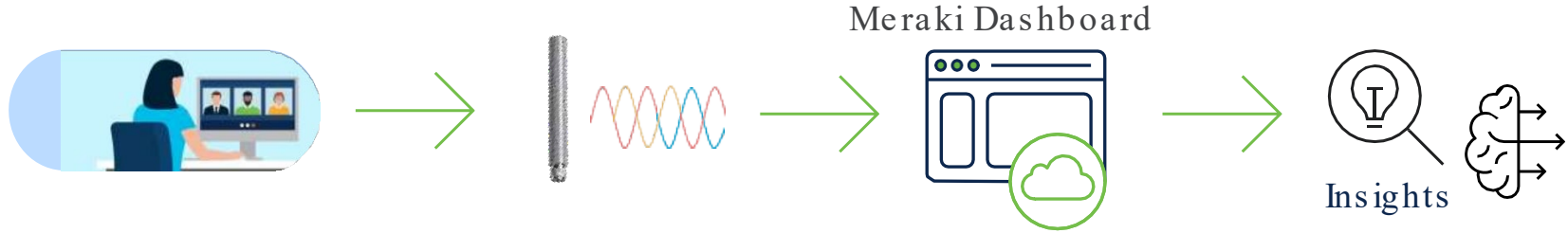
Empowers NetOps teams to do more with less resources.

AI Everywhere @Cisco

AI	Generative AI				
	Networking	Security	Collaboration	Observability	CX
AI	<ul style="list-style-type: none"> Enabled by Silicon One Scheduled Fabric Ethernet Solution <p>In development:</p> <ul style="list-style-type: none"> Next-gen AIOps Next-gen Assurance <p>Long-term:</p> <ul style="list-style-type: none"> AI Assistant for Networking (incl. network config. generator) 	<p>In development:</p> <ul style="list-style-type: none"> AI Assistant Experience (incl. AI Assistant in Firewall, XDR and cross-portfolio) Purpose-built LLMs Autonomous Actions (incl. incident summarization, incident-response, playbook recommendation and automation) 	<ul style="list-style-type: none"> Language Intelligence incl. transcription, translation, captions Webex assistant <p>In development:</p> <ul style="list-style-type: none"> New Webex AI Assistant Intelligent Contact Center LLM Orchestration Realtime Media Models incl. AI audio codec, super resolution video, etc. 	<ul style="list-style-type: none"> Model observability <p>In development:</p> <ul style="list-style-type: none"> Prompt interface AI assistant for summarization 	<ul style="list-style-type: none"> Engineer copilots Automated code creation Customer Q&A & Sentiment analysis Topology generation <p>In development:</p> <ul style="list-style-type: none"> Test script creation Root cause analysis <p>Long-term:</p> <ul style="list-style-type: none"> Network risk analysis Self-remediation Adoption advisory
	Predictive AI				
	<ul style="list-style-type: none"> Network Management Network Assurance Network Deployment Anomaly Detection Change Automation Predictive Internet 	<ul style="list-style-type: none"> Email Compromise Analysis Threat Detection Endpoint Trust Monitor Malware Protection <p>In development:</p> <ul style="list-style-type: none"> Data Protection Alert Prioritization 	<ul style="list-style-type: none"> Background noise removal Voice focus Bandwidth extension People focus / frames Personal/Team insights Cinematic Meetings Meeting Zones 	<ul style="list-style-type: none"> Statistical Modeling Baselining Anomaly Detection Intelligent Automation <p>Long-term:</p> <ul style="list-style-type: none"> Data Tagging 	<ul style="list-style-type: none"> Virtual Engineers Analytics Engine Anomaly Detection Sentiment Prediction Managed Insights Change & Assurance (Services-as-Code) CX Cloud – Insights & Analytics

AI - Enhanced RRM

Quickly assess the health and performance of the RF coverage

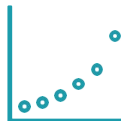
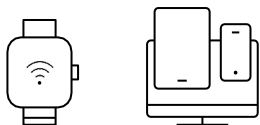
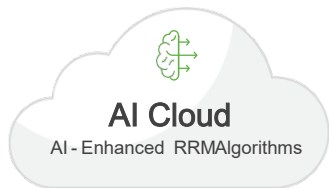


- IT admins have no view with respect to RRM changes been made on the network
- RF understanding and optimization needs special expertise
- RRM modifications require expert knowledge
- IT admins would want visibility into RRM changes (why and when it happened)
- IT administrators would want simplified recommendations with respect to RF changes
- The RRM Control Center within **Meraki Dashboard** allows IT to quickly assess the health and performance of the RF coverage.
- AI Enhanced RRM integrates the power of Artificial Intelligence and Machine Learning (AI, ML).
- Cisco AI-Enhanced RRM brings the ability to analyze historical dynamic RF data over time.

Easy Configuration, Complete Visibility & Improved Serviceability with AI Enhanced RRM

AI-Enhanced RRM

Improves Wireless Reliability



Trend -Based RRM

Optimize RF with weeks of historical analysis



Flexible Radio Assignment

Optimize band selection to minimize 2.4 GHz interference



Busy Hour Aware

Minimize disruptive changes during the critical times of day

Capabilities that AI -Enhanced RRM will bring to Meraki!

Trend -Based RRM

Optimize RF with 2 weeks of data enabling more sophisticated & efficient RRM optimization!



Radio Settings

Overview

RF Profiles

AI-RRM

Trend-based RRM

☒ Enable

Trend-based RRM uses an AI engine to improve the performance of your network ⓘ

Flexible radio assignment

☐ Enable FRA

FRA optimizes the 2.4 GHz band by strategically disabling redundant radios to reduce interference ⓘ

AI channel planning

☒ Enable AI channel planning

Improved Channel Assignment by leveraging artificial intelligence to optimize channel planning capabilities ⓘ

Busy hour

☐ Enable busy hour

AI-RRM will minimize changes during the most active hours of the day ⓘ

Sensitivity ⓘ ☐ Low ☐ Medium ☒ High

☒ Auto schedule

Based on historical data of up to the last 6 weeks ⓘ

23:00 → 08:00 ⓘ

☐ Manual schedule



Flexible Radio Assignment

Place radios on the most optimal band/mode to minimize interference on 2.4 GHz at the touch of a button!

Enhanced Busy Hour

Optimizations are deferred until after the busy hour, using busy hour data, rather than just suppressed!



Capabilities that AI -Enhanced RRM will bring to Meraki!

AI-Driven Channel Change

Auto Channel Update [« hide](#)

New_Channel 53/20

Old_Channel 53/80

Band 6

Radio 2

Event_Reason -Channel bandwidth quality is improved 23 percent

-Channel width is decreased to reduce co-channel interference

AI-Driven Tx Power Change

Tx power reduced to decrease network interference [« hide](#)

Old_Power 7

New_Power 4

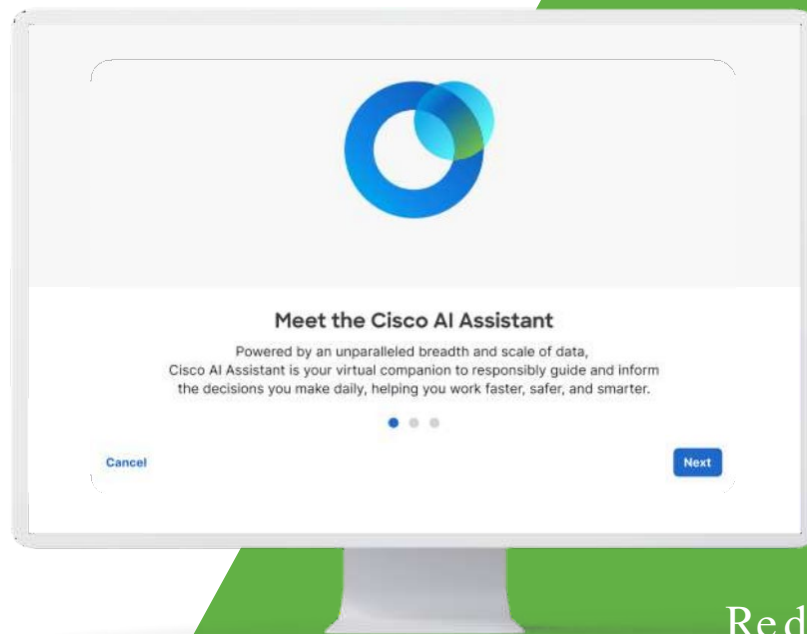
Radio 1

Event_Reason -Tx Power is changed to 4 dBm from 7 dBm

-Old Tx Power 7 dBm is higher than optimal Tx Power 4 dBm

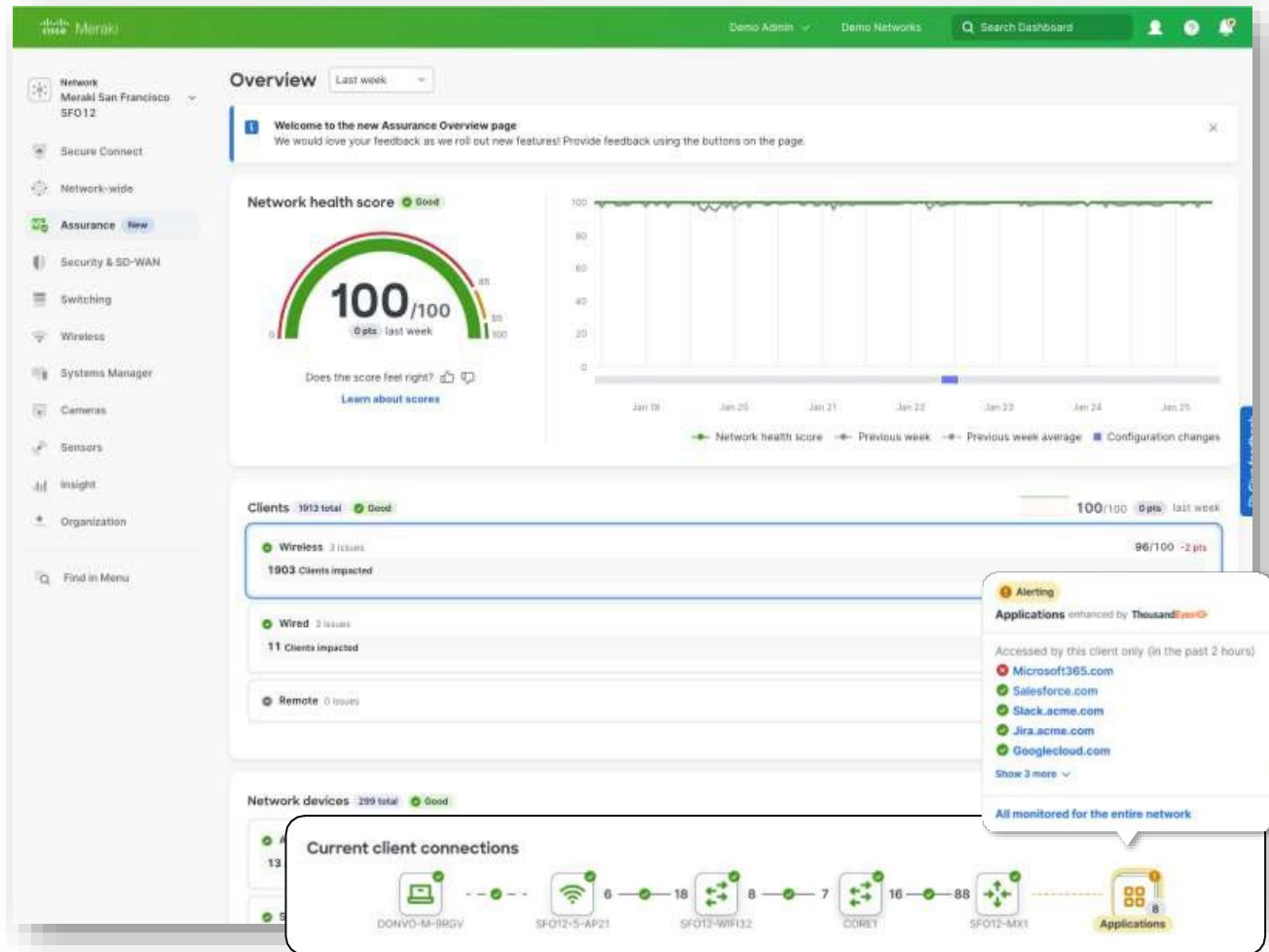
-Channel Max Power is 24 dBm and TPC threshold is -70

Unlock network intelligence with **Cisco AI Assistant**



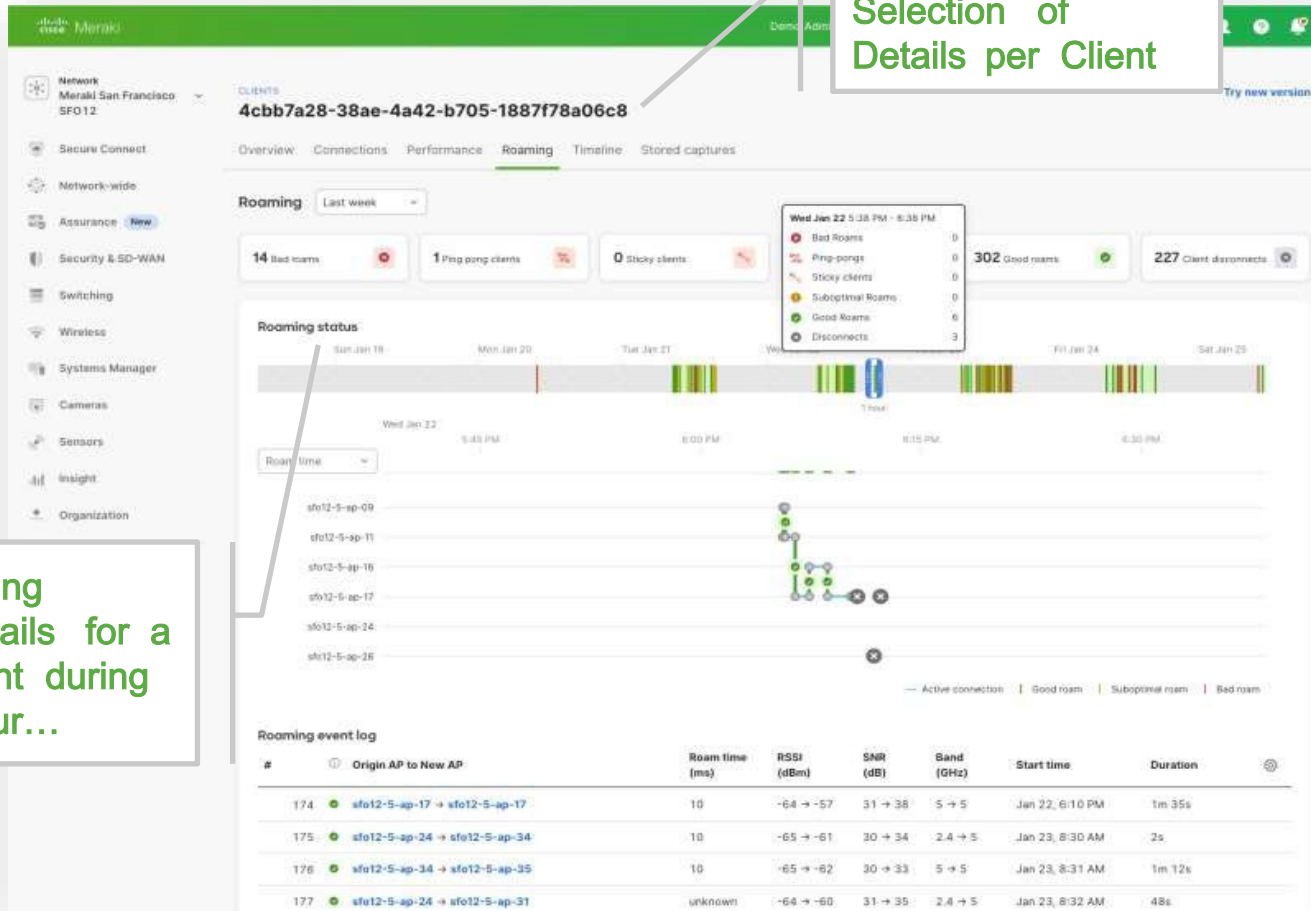
Meraki Assurance Dashboard

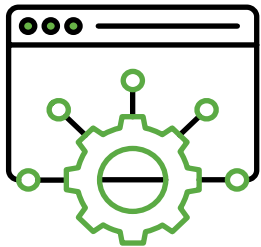
- Centralized alerts and monitoring
- Visibility across all network devices



Selection of
Details per Client

Obtain roaming
behavior details for a
specific client during
selected hour...





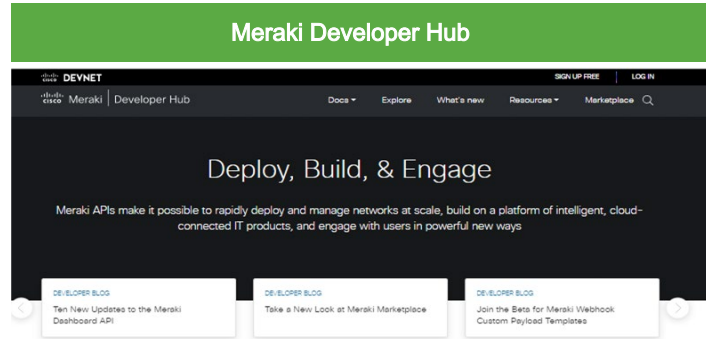
What APIs can do

The term API is an acronym, and it stands for "Application Programming Interface."

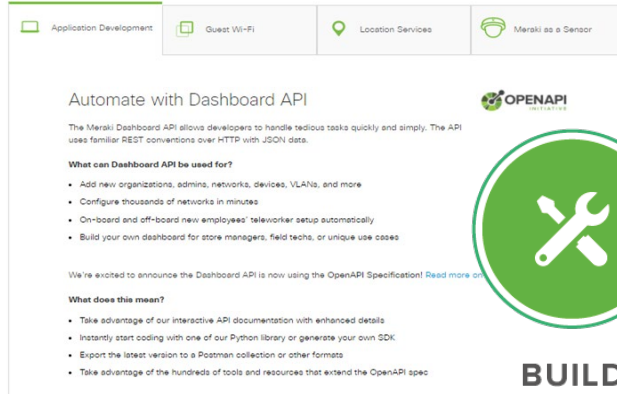
- **Mass provisioning**
Set up tens of thousands of networks across time zones in minutes
- **Network automation**
Automatically configure devices based on environmental factors and custom criteria
- **Advanced monitoring**
Monitor devices and trigger workflows in case of failure
- **Advanced analytics**
Produce statistical reports on -demand, e.g. % of wireless vs. wired clients
- **Cloud integrations**
Integrate with your own business systems and official ecosystem partner applications

Marketplace + Developer APIs

API Product Management



What can you do with the Meraki API?



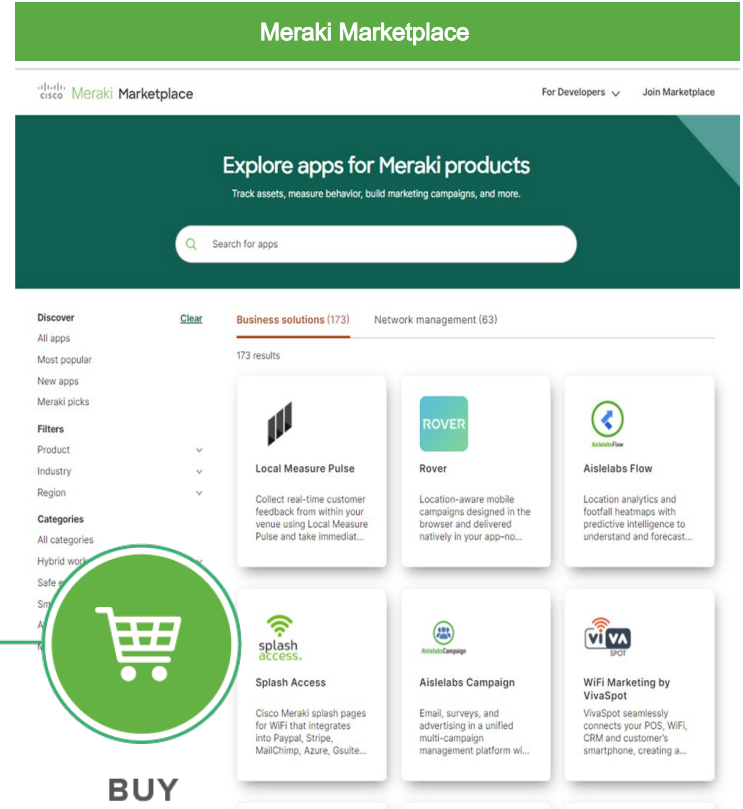
BUILD

APIs

APIs

BUY

Ecosystem Business Development



Open APIs and Ecosystem



Integrated



Integrated

BUSINESS OUTCOME SOLUTIONS

- AI & ML Video Analytics
- Asset & People Tracking
- Real-time, Interactive Customer Experience
- POS & Monetize Wi-Fi
- Physical Security & Access Control
- Dwelling & Dormitory Integrators
- Wayfinding & Mapping
- Workplace Solutions
- Video & Wi-Fi Analytics: Engagement

ADVANCED IT SOLUTIONS

- Automation
- Identity Services
- IT Service Management Tools
- IOT Security
- Managed Service Solutions
- Application & Performance Monitoring
- Network Monitoring & Logging
- SD-WAN Monitoring & Performance
- Network Security

#10 most used B2B app at work



INGRAM MICRO[®]


CISCO
Distributor